

# **SINOVAA ENGINEERING**

**(Genuine Compact Spinning Spares & Auto Doffer Spares)**

**(AN ISO 9001:2015 CERTIFIED COMPANY)**

---

**Suessen / LR / Rieter / Toyota - Compact Spares**

**LR / Rieter / Toyota - Auto Doffer Spares**

***Delighting Customers is our MOTO..***



Sinovaa Engineering is one of the manufacturers of high precision injection molding plastic Components which are used in textile spinning machinery spar parts.

Proprietor Mr.R.Nagaiah having versatile experience over 25 years in engineering process, sourcing and development of various mechanical components.

Latest 3D modeling, vision measurement system being used for Development and Re -Engineering. Material testing done at renowned laboratories in the Germany and Taiwan. Also raw materials are being imported from Taiwan, Germany, and China.

We have German make Arburg injection molding machine with 100 ton capacity which is able to produce 1gm to 150 grams plastic components. Also CNC machined parts and other industrial plastic component spare parts are produced.

"Delighting customers is our motto". We are focusing on On-time delivery to our customers. We empower our team members to offer high quality products to customers. Always customers can utilize our team for their cost saving program.

Kindly enroll Sinovaa Engineering as your registered vendor. Request you to consider us an extension of your team for your cost reduction program.

# SUESSEN ELITE COMPACT SPARES



**ELI-TOP BOX**  
LR R/f



**FLIP TYPE**  
ELI-TOP BOX



**17T**  
TOP ROLLER  
LR R/F &  
TOYOTA R/F



**22T**  
TOP ROLLER  
LR R/F &  
TOYOTA R/F



**BIG**  
INSERT



**JET**  
INSERT



**SUCTION TUBE**  
105mm



**3 WAY**  
CONDENSOR  
LR & TOYOTA R/f



**19T WHEEL**  
WITH BUSH  
BROWN



**19T WHEEL**  
WITH BUSH  
WHITE



**19T WHEEL**  
WITHOUT BUSH  
BROWN



**CYLINDRICAL PIN**  
4.0MM M6\*36.5 E-1



**SUCTION NOZZLE**  
6.30mm - RED



**SUCTION NOZZLE**  
5.80mm - BLACK



**PELICON**  
NOZZLE  
10.00mm



**PELICON**  
NOZZLE  
8.50mm



**MESH APRON**  
BLACK  
140mesh



**MESH APRON**  
GREY  
140mesh



**25T**  
HELICAL GEAR  
BEARING UNIT



**28T**  
HELICAL GEAR  
BEARING UNIT



**120mm**  
BEARING UNIT  
SHAFT



**132mm**  
BEARING UNIT  
SHAFT



**115T**  
HELICAL GEAR



**26T**  
HELICAL GEAR



**28T**  
TIMING PULLEY



# SUESSEN ELITE COMPACT SPARES



**41T  
TIMING PULLEY**



**SHAFT A  
10265797**



**SHAFT BC  
10266396**



**SHAFT D  
10266391**



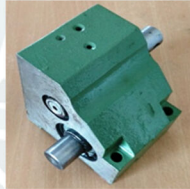
**SHAFT SZ  
10266530**



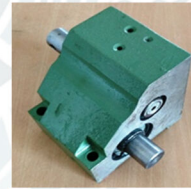
**INTERMEDIATE  
SHAFT - LH & RH  
282mm, 313mm &  
463mm**



**DRIVE  
SHAFT**



**BEARING  
UNIT - LH  
LR6/S,  
LR60/S & LR9**



**BEARING  
UNIT - RH  
LR6/S,  
LR60/S & LR9**



**SINGLE  
WAY  
CONDENSOR**



**TOP ARM  
SPRING PLATE**



**FISH MOUTH  
GROMMET**



**SUCTION TUBE  
GROMMET  
LR R/F & TOYOTA R/F**



**END PLUG LH**



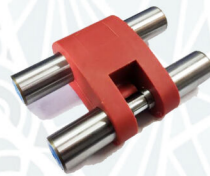
**END PLUG RH**



**ELI - TOP BOX  
TOYOTA R/F**



**SUCTION TUBE  
TOYOTA R/F**



**ELI - TOP BOX  
ASSEMBLY  
WITHOUT COTS  
LR R/F**



**ELI - TOP BOX  
ASSEMBLY  
WITHOUT COTS  
TOYOTA R/F**



**FLIP TYPE  
ELI - TOP BOX  
ASSEMBLY  
WITHOUT COTS**



**SHAFT 4 GBL  
TCB  
RX240 R/F  
RX300 R/F**



**SHAFT 2 GBL  
TC  
RX240 R/F  
RX300 R/F**



**SHAFT TWIST CONSTANT  
'A' WHEEL  
RX240 R/F  
RX300 R/F**



**SMART FLEX  
COUPLING  
OD - 89.0 & 93.0mm**



# LR COMPACT & AUTO DOFFER SPARES



**YELLOW GRIPPER  
(OLD TYPE)**  
7G0502470



**YELLOW GRIPPER  
(NEW TYPE)**  
G053351/6



**YELLOW GRIPPER  
(ROUND TYPE)**  
18DUI & 20DUI



**GRIPPER BODY**  
G505331/5



**PISTON**  
G053351/7



**PALLET  
WITH RIB &  
WITHOUT RIB**  
G505313/7



**DIAPHRAGM**  
4G0534732



**SPRING**  
G050313/6



**"O" RING**  
10.0\*3.0mm  
7G0502476



**"O" RING  
TYRE TYPE**  
10.0\*15.50mm  
G050315/6



**BOTTOM PEG**  
18DUI 7 20DUI  
5G0533497  
LINK CONER



**BOTTOM PEG  
TAPER TIP**  
65GRAMS  
TUBE LOADER



**BOTTOM PEG  
TAPER TIP**  
79GRAMS  
TUBE LOADER



**INTERMEDIATE  
PEG**  
18DUI & 20DUI



**SPINDLE  
BRAKE**  
ID - 24.20mm



**SPINDLE  
BRAKE**  
LR9



**SEPARATOR**  
SHORT 152mm,  
LONG 165mm &  
210mm



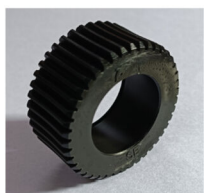
**CONNECTING  
END**  
91mm - INSIDE



**CONNECTING  
END**  
91mm - OUTSIDE



**BEARING  
CAP**



**42T  
SPINPACK  
COMPACT  
WHEEL**



# RIETER COMPACT & AUTO DOFFER SPARES



**STUD DIA**  
18DUI



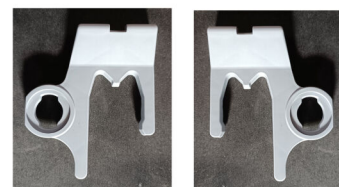
**STUD DIA**  
20DUI



**CARRIER**  
**BOTTOM &**  
**SHORT**



**GRIPPER**  
**SEAL**



**TOP CARRIER**  
**LH & RH - ANGLE TYPE**



**SPLITTED**  
**AIR GUIDE ELEMENT**  
LH & RH



**SUCTION**  
**COMPLETE**



**COMPACT**  
**DRUM COVER**



**SPINDLE**  
**BRAKE**



**BOTTOM**  
**PEG**

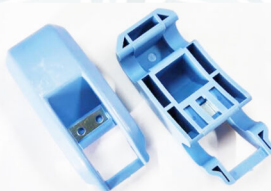
## OTHER COMPACT SPARES



**40TH WHEEL**  
ID - 24.00mm  
RIFA & H FANG - LR R/F  
ID - 28.00mm  
H FANG - LR R/F



**41TH WHEEL**  
ID - 24.00mm  
TOYOTA R/F



**CRADLE ROLLER**  
**DELIVERY**  
H-FANG



**PRESSURE PAD**  
**STATEX COMPACT**  
145mm, 127mm &  
113mm

## TOYOTA COMPACT SPARES



**38TH**  
**WHEEL**



**MESH APRON**  
**WHITE**



**SPINDLE**  
**BRAKE**  
RX240



**SPINDLE**  
**BRAKE**  
RX300



**CRADLE ROLLER**  
**DELIVERY**



# TOYOTA AUTO DOFFER SPARES



**GREY GRIPPER**  
18DUI



**BLACK GRIPPER**  
20DUI



**GRIPPER**  
BODY



**DIAPHRAGM**



**PISTON**  
18DUI & 20DUI



**GRIPPER**  
PALLET



**"O" RING**  
5.50\*1.75mm



**SPRING**



**SIDE TUBE**



**INTERMEDIATE**  
PEG  
18DUI GREY &  
20DUI WHITE



**BOTTOM**  
PEG TRAY  
18DUI GREY &  
20DUI WHITE

## LR AUTO DOFFER ASSEMBLY



**ROUND TYPE**  
GRIPPER  
ASSEMBLY  
18DUI & 20DUI



**NEW TYPE**  
GRIPPER  
ASSEMBLY

## TOYOTA AUTO DOFFER ASSEMBLY



**18DUI GREY**  
GRIPPER  
ASSEMBLY



**20DUI BLACK**  
GRIPPER  
ASSEMBLY





- 🏠 Address : **No.1/26D, Gandhi Street,  
Vilankurichi, Coimbatore - 641 035. Tamilnadu.**
- ☎ Mob.No.: **+91 63690 25509, 63690 15116**
- ✉ E-mail : **sinovaaengineering@gmail.com**
- 🌐 Website : **www.sinovaaengineering.com**